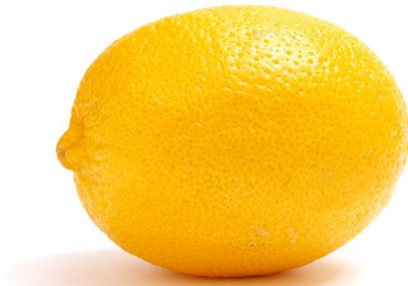


# LemonIDE™

## Integrated Development Environment for Eddy

### Features

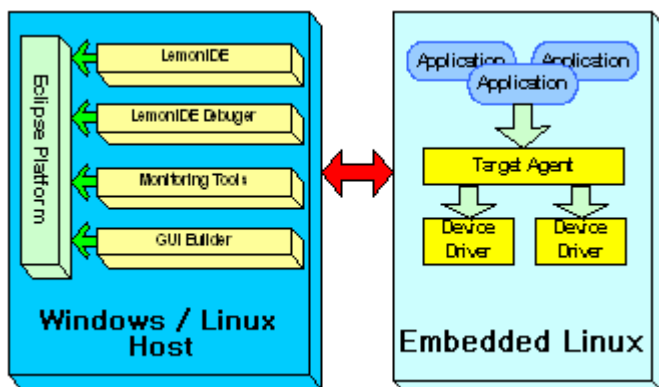
Eclipse based IDE  
 GUI Source Code Editor  
 Target System Application Remote Execution  
 Target System Remote Monitoring  
 Remote Debugger  
 Project Management Support  
 Cross Compile Environment  
 Makefile Auto Creation  
 Runs on Windows/Linux Host Systems



LemonIDE® is an integrated development environment (IDE) for Eddy Module, Built on open source Eclipse framework LemonIDE® provides an easy & effective GUI (Graphical User Interface) for application and firmware developments that runs on SystemBase's embedded Linux

LemonIDE encompasses GNU C/C++ Compiler, Source Code Editor and Debugger delivering a one-stop development environment to embedded developers relieving inconveniences of preexisting TUI(Text User Interface). Commands for compiler and debugger no longer needed to be memorized and punched in as LemonIDE's common GUI provides conveniences of simple mouse click execution.

Makefile Auto Creation, Auto Source Code Completion, Remote Debugging, Plug-in Support and Target System Monitoring features of LemonIDE allows developers to concentrate solely on their programs radically enhancing embedded software productivity.



**LemonIDE™ provides a convenient one stop turnkey for your embedded software development**

### Integrated Development Environment

Provides software development conveniences and efficiency.

Multi project management, Makefile Auto Creation, Syntax Highlighting, Multi File Editing, ARM-Linux Cross Compiler, gdb Debugger, Target System Monitoring, Project Import/Export features supported.

### Debugging

Various GUI based debugging mode supported. Target System Remote Debugging and Trace Point/Frame Debugging features supported for easy error correction.

Memory, Stack, Signal, Register Status Information also provided for easy error detection.

### Monitoring

Monitoring Program is executed on Target Systems and relates with GUI IDE providing Target System Information, File Transfers and Remote Execution capabilities.

Monitoring Tools allows continuous real-time monitoring of the Target System. Target System's CPU, Memory, Process and Interrupt Information can be reviewed graphically.

## Eclipse

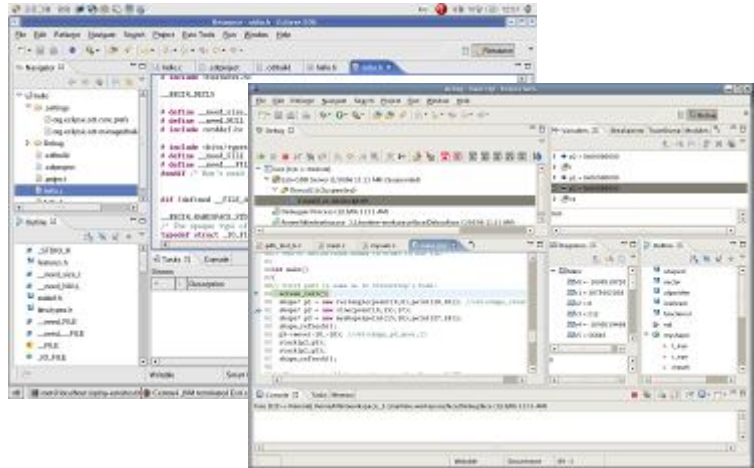
- Eclipse SDK 3.2.2
- CDT core 3.1.2
- CVS core 3.2.2

## Compiler

- GNU C/C++ 4.1.1
- ARM-Linux Cross Compiler

## Editor

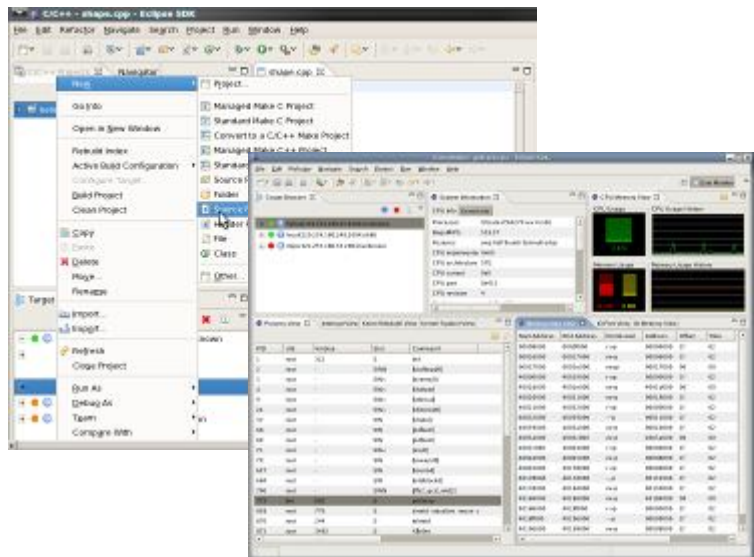
- C/C++ Source Code Editor
- C/C++ Auto Code Completion
- Syntax Highlighting
- Makefile Auto Creation
- Source Browser
- Multiple File Edit through Tab Interface
- File Search & Advanced Search Support
- File to Designated Editor Association Support
- Explicit Explanation Support on Errors
- Auto Build Support
- Remote Execution Support



Resource View and Visual Source Code Debugger

## Debugger

- GNU gdb 6.3.90
- Visual Source Code Debugger
- Trace Point & Trace Frame based Debugging Support
- Remote Debugging Support
- Multi-Thread Debugging Support



Project Manager and Target MonitorTool

## Target Monitor Tool

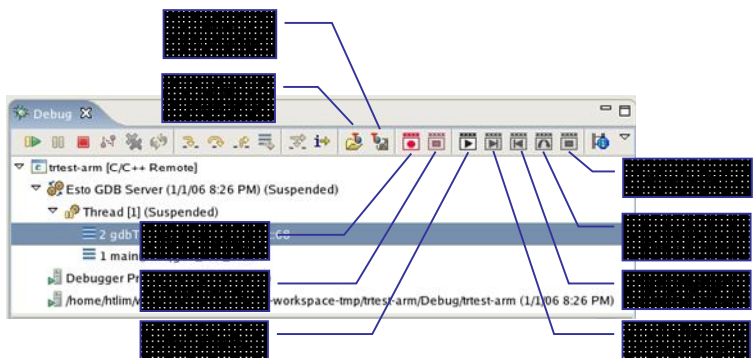
- Targetview Plug-in 1.0.0
- Monitor Plug-in 1.3.4

## Host System

- Windows or Linux Installed System
- JRE 5.0 or above required
- Virtual Utility aided installation possible in Windows Environment

## Tested Linux Distro List

- Windows XP SP2
- Windows 2000/2003
- Fedora Core 4, 5, 6
- Redhat 9.0
- Redhat Enterprise Linux
- Ubuntu Linux 6.x, 7.x
- Debian 4.0
- SUSE Linux
- CentOS 4.5
- Asianux



Debugger base on Start and Stop

## Target System

- Eddy-CPU v2.1 / v2.1
- Eddy-S4M v2.1 / v2.5
- Eddy-CPU/mp v2.1 / v2.5

## Ordering Information

LemonIDE is included in Eddy Development Kit and is not sold separately.