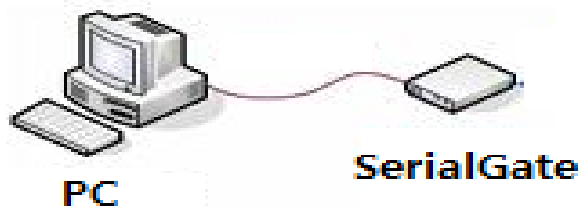


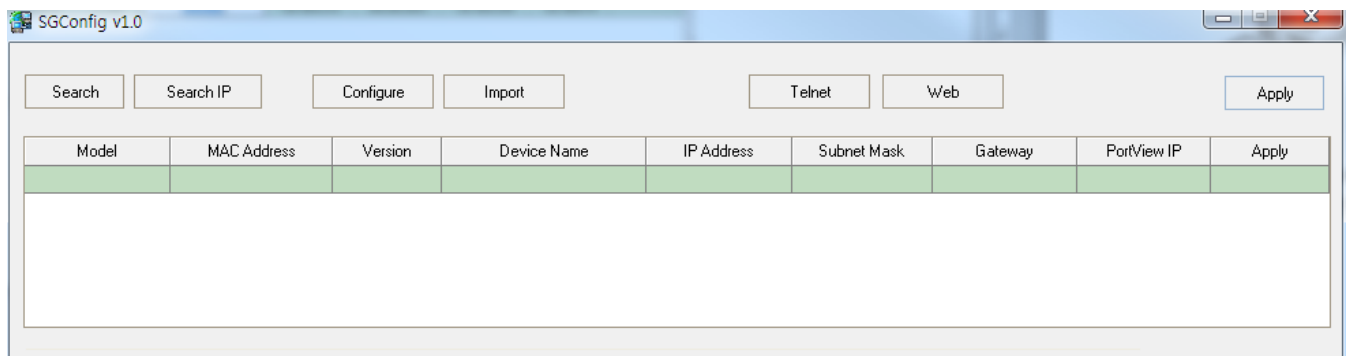
SGConfig Quick Manual

- SGConfig sets operation-environment for the SerialGate Series.
- SGConfig is available for SerialGates with firmware 2.1.235 and above.

1. How to connect



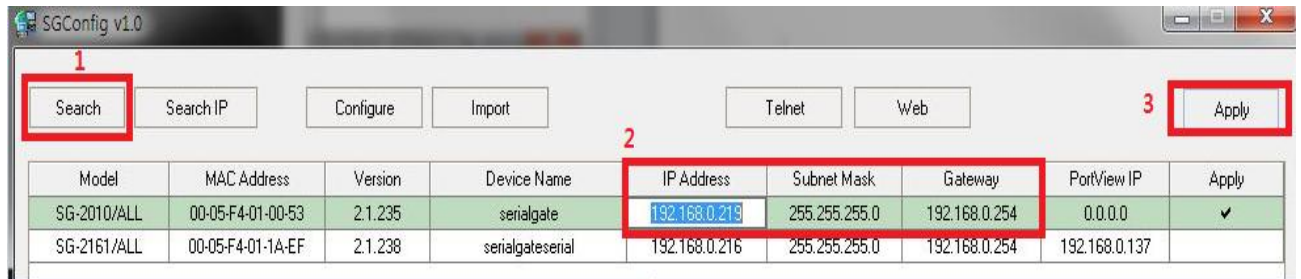
- ① Connect PC and SerialGate with Ethernet port using Ethernet cable (Direct or Cross).
- ② Supply power to SerialGate.
- ③ Run SGConfig.



- Search : Search for SerialGates from the same Network
- Search IP : Use specific IP to search for a specific SerialGate
- Configure : Modify detailed operation-environment of the selected SerialGate
- Import : Apply saved configuration to the other SerialGate
- Telnet : Use telnet to connect to the selected SerialGate
- Web : Connect to Web manager of the selected SerialGate
- Apply : Apply the Network settings in the SerialGate

2. Modify Network Address

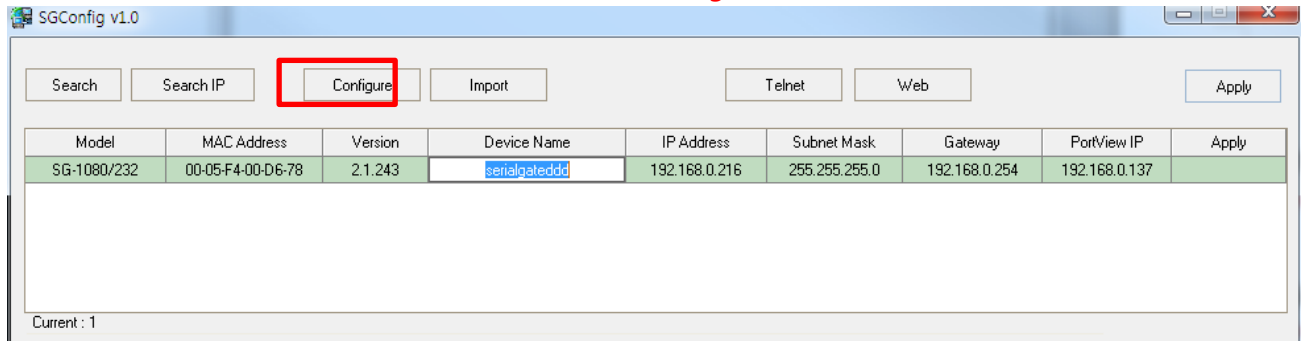
Modify IP/subnet/Gateway address to connect SerialGate with the Network.



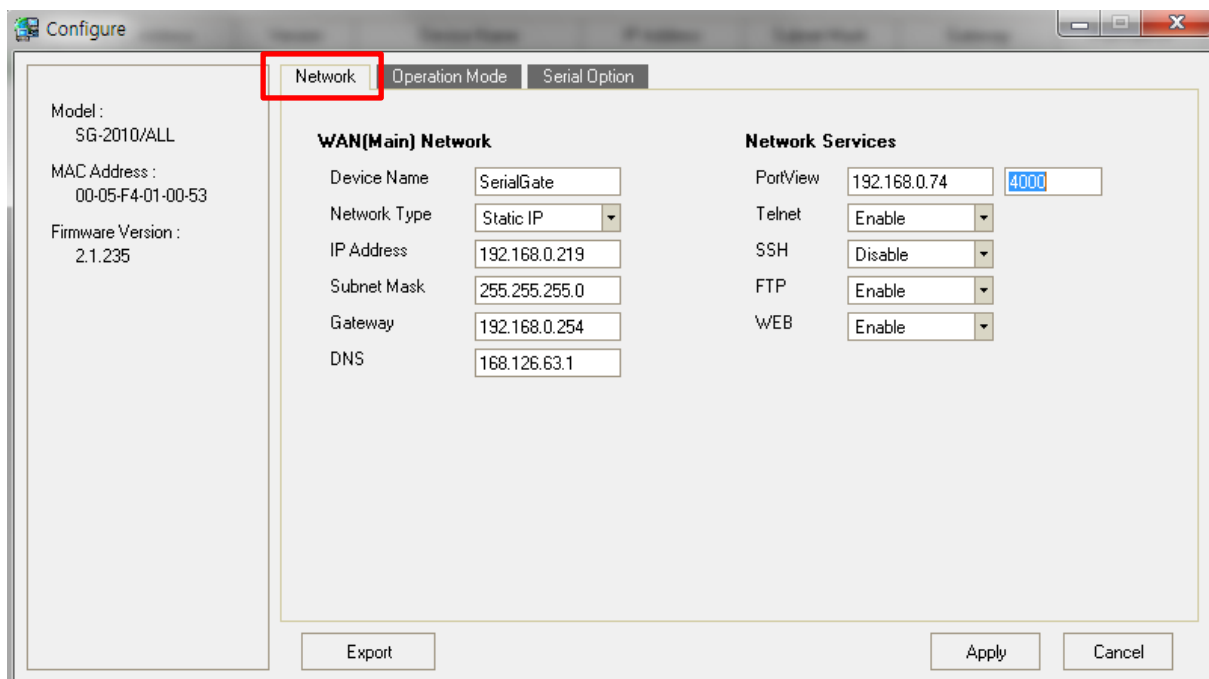
- ① Click "**Search**" button to search for SerialGates connected to the Network.
- ② Modify the IP, Subnet, Gateway address of the selected SerialGate.
- ③ Click "**Apply**" to modify the Network address of the selected SerialGate.

3. Modify Operation-Environment of a Serial Port

Select the SerialGate from the search and click the "Configure" button.



Network: The Network settings for the selected SerialGate can be modified.



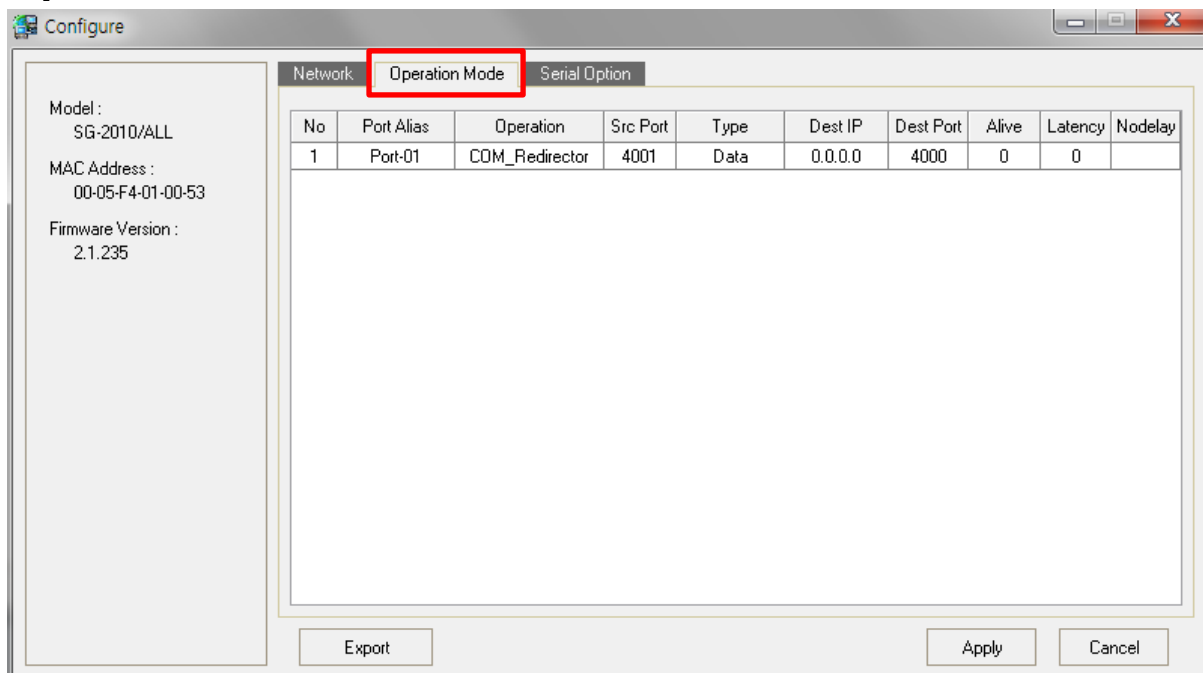
WAN (Internet)

- Device Name : Set the device name
- Network Type : Choose either from Static IP or using DHCP to automatically acquire an IP.
- IP Address : Set the IP address
- Subnet Mask : Set the Subnet Mask address
- Gateway : Set the Gateway address
- DNS : Set the IP address of the DNS (Domain Name Service)

Network Services

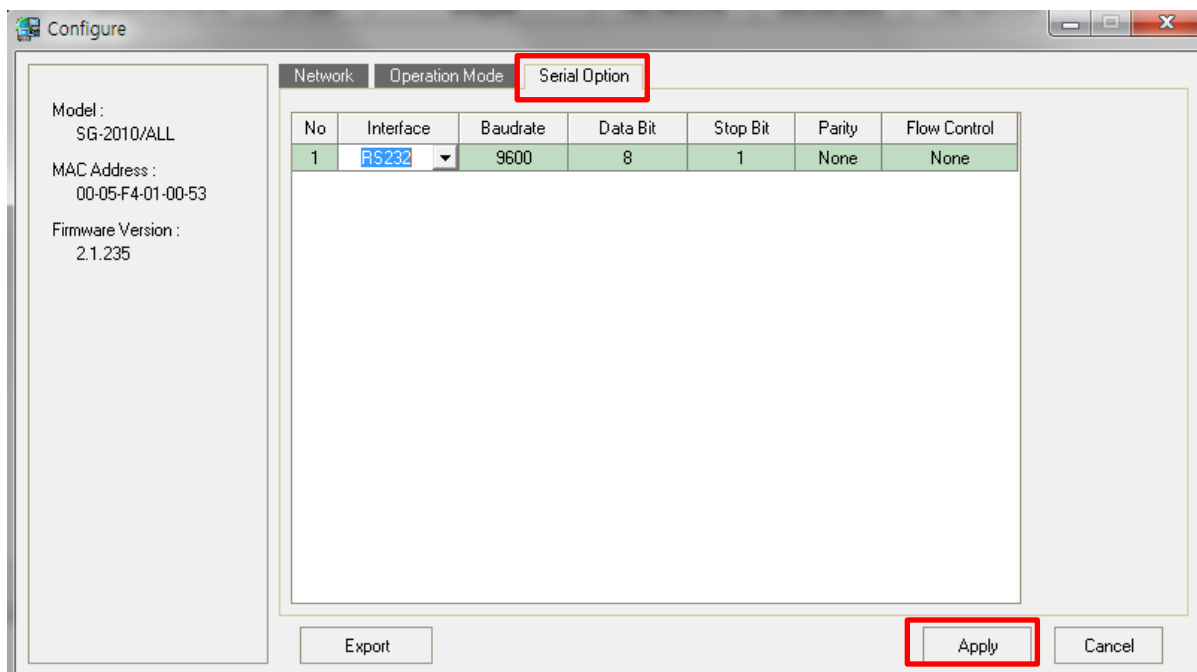
- PortView : Set the IP address of PC where PortView is installed. The port number is 4000.
Telnet : Set whether to use a telnet to connect
SSH : Set whether to use SSH
FTP : Set whether to use FTP
WEB : Set whether to use WEB service

Operation Mode: The operation-environment of the each ports can be modified.



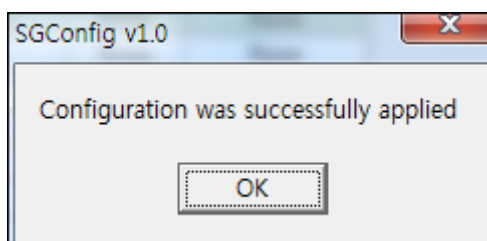
- No : Serial Port number
Port Alias : Set the port alias
Operation : Set the operational protocol used the serial port
Src Port : Set the socket number assigned to the port
Type : Set whether to check the signal line of connected serial port
Dest IP : Set the target IP address when using TCP Client, UDP Client modes
Dest Port : Set the target port number when using TCP Client, UDP Client modes
Alive : After the socket connection is established, when there are no signal for given time, the socket restarts.
Latency : Set if continuous data are received, they will be sent through the socket at once.
Nodelay : Send data through the socket without any delay.

Serial Option: The interface, communication speed, and other settings can be modified.



- No : Serial Port number
- Interface : Set the interface of the serial port
- Baud rate : Set the communication speed of the serial port
- Data Bit : Number of bits in a byte
- Stop Bit : Set the stop bit
- Parity : Set the type of the parity
- Flow Control : Set the type of the flow control

When all settings are selected, click "**Apply**" button to configure the system with following message.

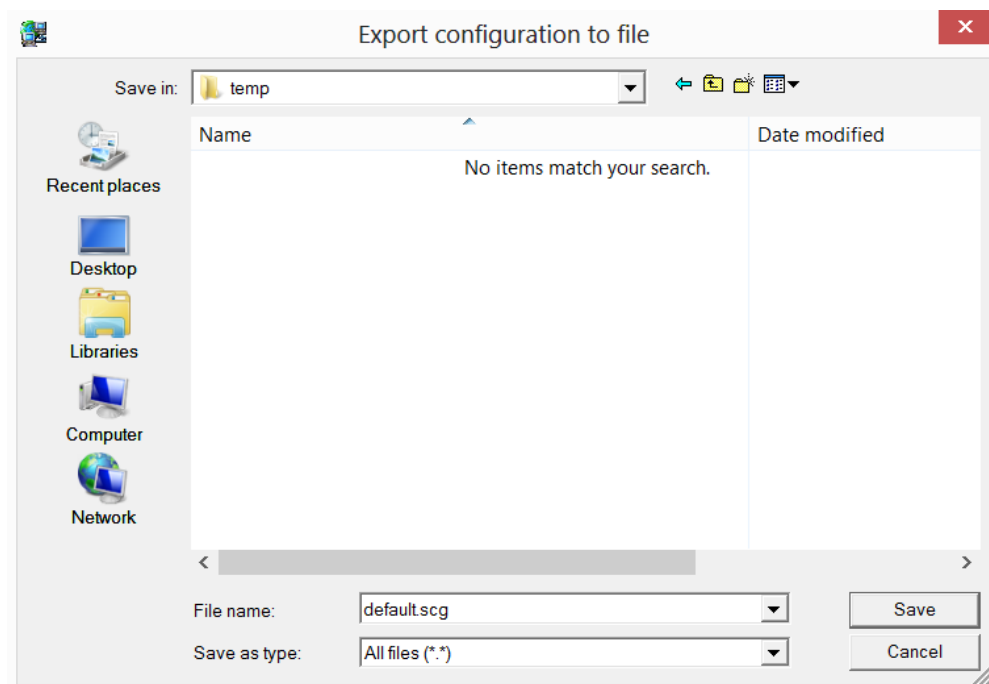
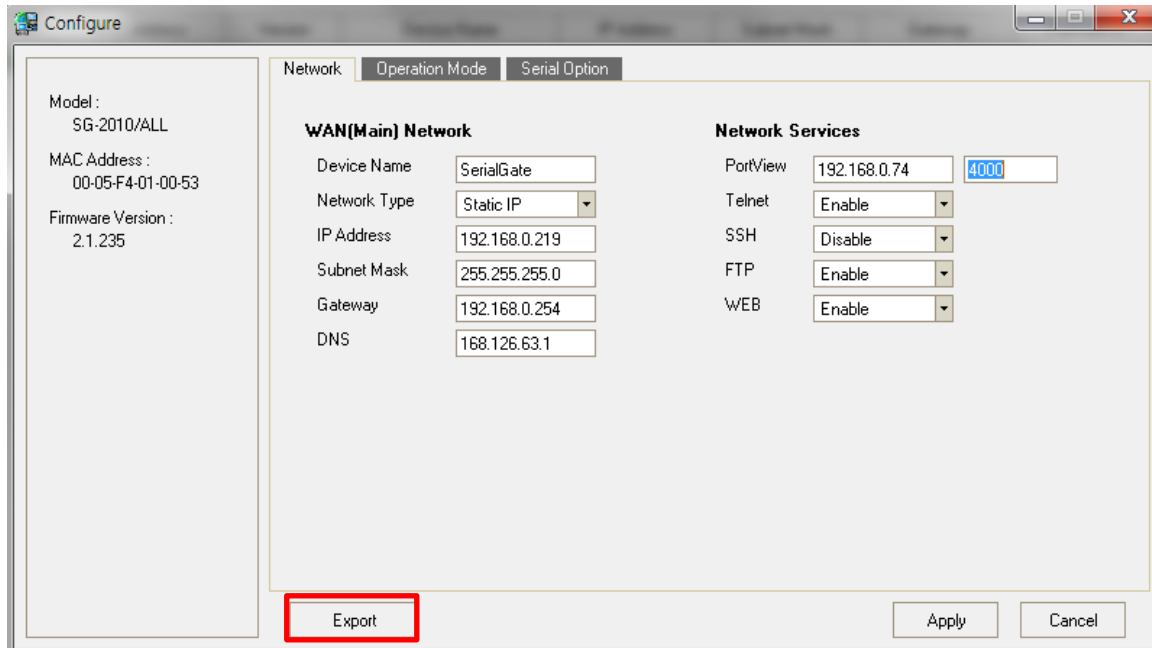


If you do not wish to modify any change, click "**Cancel**" button to close the window without any changes.

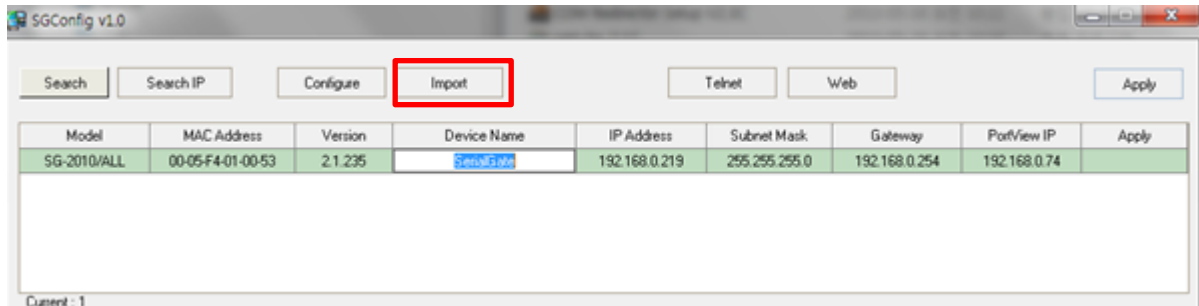
Appendix (Save/Restore the configuration to/from a file)

- Save the configuration of a SerialGate to a file and after replacing the device, use the file to restore the configuration.

Click **"Export"** from the configure screen, then save current settings to a file.



When restoring the value, use **Search** to select the SerialGate unit you wish to restore the settings from the file and click **Import** button.



Once the file is selected, settings will be displayed. Click **Apply** button to set the configuration to current SerialGate.

When applying settings to other SerialGate devices, they all cannot have the same IP address. Therefore, change the IP address and click **Apply** button.

