

# SerialGate

## Serial to LAN Device Server

SerialGate is a device server that connects legacy serial devices to LAN. SerialGate series is composed of models with 1, 2, 4, 8,16 ports to provide suitable environment for various needs and dimensions of the network. SerialGate can be applied in many applications of practice such as; connecting POS(Point of Sale) related devices, connecting various serial devices in factories, monitoring and controlling serial devices in remote area through web browser, manipulating security/medical devices, building automation and machinery operations.



### Features

#### Remote Management

With the management program, PortView, all serial devices connected to SerialGate can be monitored and managed in real-time. All input/output serial data can be tracked or saved as a file.

#### COM Port Redirection

Serial ports of SerialGate connected by network can be used just like COM ports on the user's PC.

#### Various Serial Interfaces

## SerialGate-1010 RS232 Model

1 Port RS232 Serial interface to LAN Device server



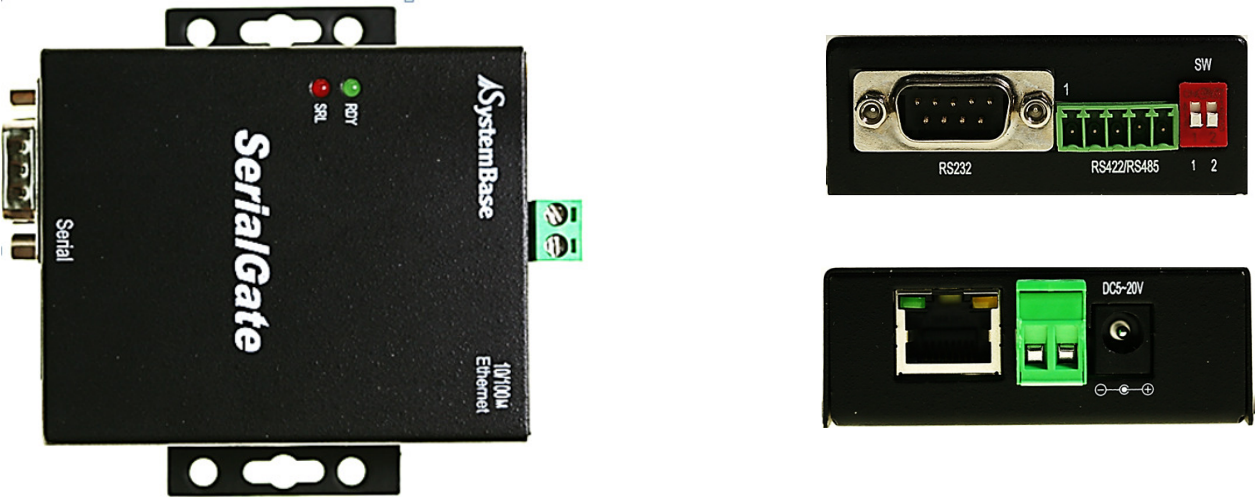
## SerialGate-1010 Combo Model

1 Port Combo(RS422/RS485) Serial interface to LAN Device server



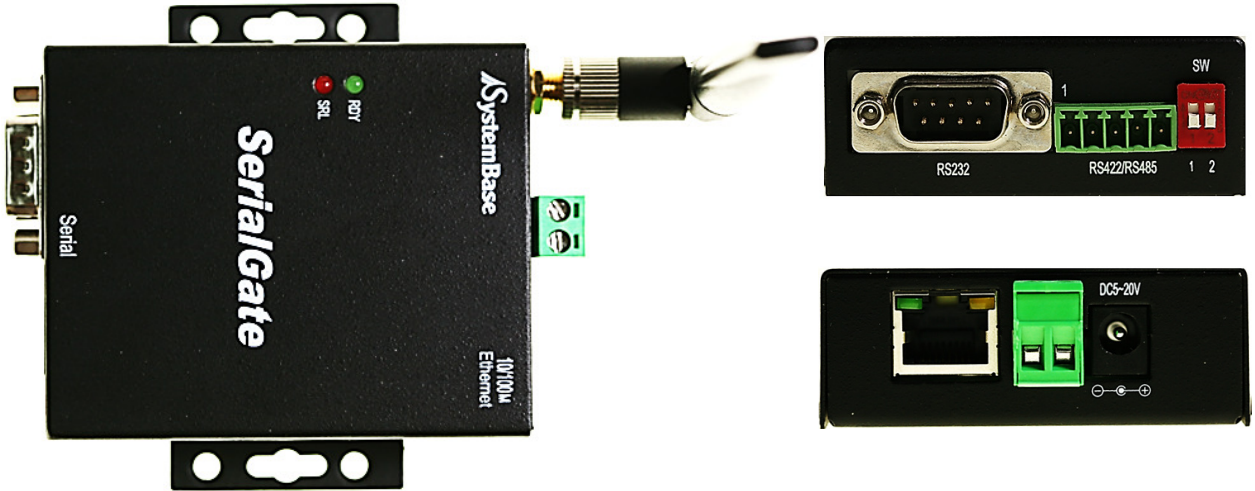
# SerialGate-1010/ALL Model

1 Port RS232/RS422/RS485 Serial interface to LAN Device server



# SerialGate-1010w/ALL Model

1 Port RS232/RS422/RS485 Serial interface to LAN & WiFi Device server



## SerialGate-1020 RS232 Model

2 Ports RS232 Serial interface to LAN Device server



## SerialGate-1020 Combo Model

2 Ports Combo(RS422/RS485) Serial interface to LAN Device server



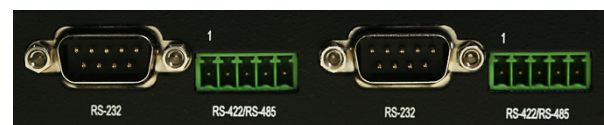
## SerialGate-1020/ALL Model

2 Ports RS232/RS422/RS485 Serial interface to LAN Device server



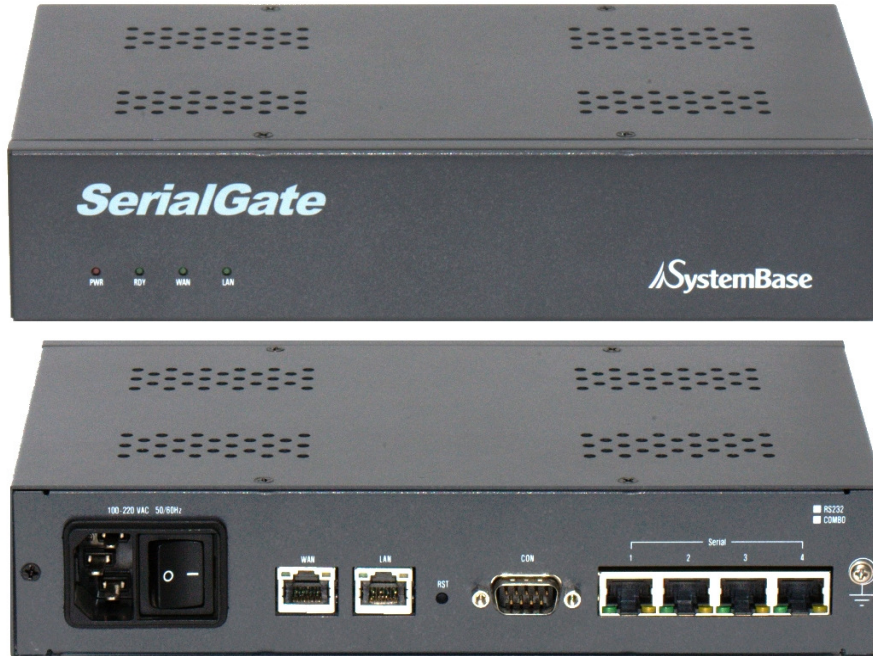
## SerialGate-1020w/ALL Model

2 Ports RS232/RS422/RS485 Serial interface to LAN & WiFi Device server



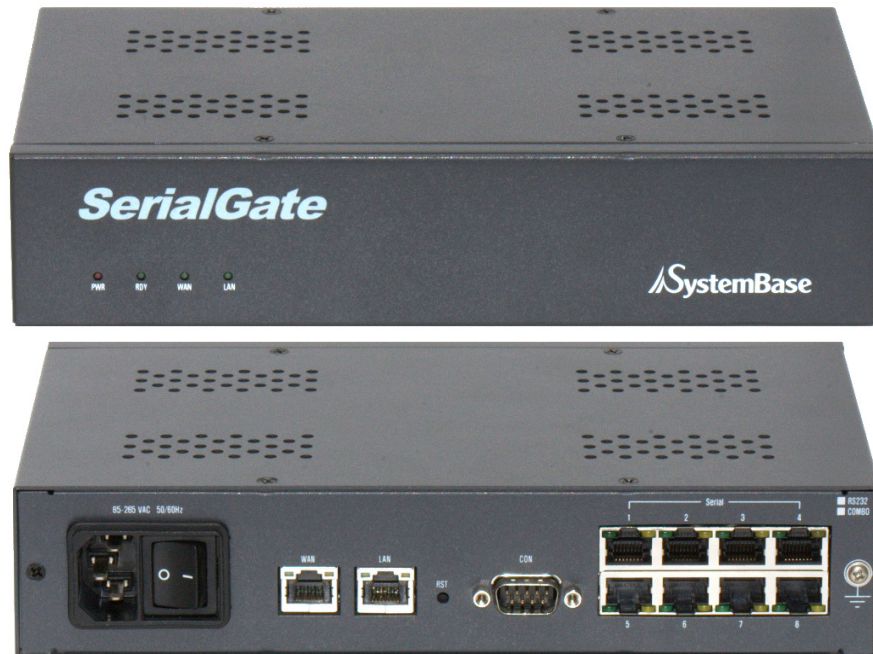
## ***SerialGate-1040 RS232/Combo Model***

**4 Ports RS232 or Combo(RS422/RS485) Serial interface to LAN Device server**



## ***SerialGate-1080 RS232/Combo Model***

**8 Ports RS232 or Combo(RS422/RS485) Serial interface to LAN Device server**



## SerialGate-1160 Model

16 Ports RS232/RS422/RS485 Serial interface to LAN Device server



# SerialGate SPEC SHEET

## Communication

LAN Port	SerialGate-1010 SerialGate-1010/ALL SerialGate-1010w/ALL SerialGate-1020 SerialGate-1020/ALL SerialGate-1020w/ALL	10/100Mbps RJ-45 Port * 1EA
	SerialGate-1040 SerialGate-1080 SerialGate-1160	10/100Mbps RJ-45 Port * 2EA
Network	Static IP, DHCP IP	
Serial Port Num.	SerialGate-1010	1 Port ( RS232 or COMBO(RS422/RS485) )
	SerialGate-1010/ALL	1 Port ( RS232/RS422/RS485 )
	SerialGate-1010w/ALL	1 Port ( RS232/RS422/RS485 )
	SerialGate-1020	2 Ports ( RS232 or COMBO(RS422/RS485) )
	SerialGate-1020/ALL	2 Ports ( RS232/RS422/RS485 )
	SerialGate-1020w/ALL	2 Ports ( RS232/RS422/RS485 )
	SerialGate-1040	4 Ports ( RS232 or COMBO(RS422/RS485) )
	SerialGate-1080	8 Ports ( RS232 or COMBO(RS422/RS485) )
	SerialGate-1160	16 Ports ( RS232/RS422/RS485 )
Serial Max Speed	Max 921.6kbps	



# SerialGate SPEC SHEET

## Hardware

Process	SerialGate-Series	400Mhz
	SerialGate-1010, SerialGate-1020 only	210Mhz
Flash Memory	8MByte (SerialGate-1010: 4MByte)	
SDRAM	32MByte	
Power	SerialGate-1010	DC 9 ~ 30V Adapter(Terminal Block)
	SerialGate-1020	Power Consumption :2W
	SerialGate-1010(w)/ALL	DC 9 ~ 30V Adapter(Terminal Block)
	SerialGate-1020(w)/ALL	Power Consumption :2.8W
	SerialGate-1040	100 ~ 220 VAC(Free Volt)
	SerialGate-1080 SerialGate-1160	Power Consumption :2.5W
Size	SerialGate-1010	71.9(W)*107.5(L)*25.2(H)mm
	SerialGate-1020	
	SerialGate-1010(w)/ALL	65(W)*79.5(L)*24.3(H)mm
	SerialGate-1020(w)/ALL	240(W) * 150(L)* 50(H)mm
	SerialGate-1040	240(W) * 150(L)* 50(H)mm
	SerialGate-1080	
SerialGate-1160		
Weight	SerialGate-1010	125 g
	SerialGate-1020	130 g
	SerialGate-1010(w)/ALL	150g(Includes Antenna, Antenna:20g)
	SerialGate-1020(w)/ALL	220g(Includes Antenna, Antenna:20g)
	SerialGate-1040	1,175 g
	SerialGate-1080	1,215 g
	SerialGate-1160	2,470 g
Operation Temperature	SerialGate-1010	-40°C ~ 85°C
	SerialGate-1020	
	SerialGate-1010(w)/ALL	
	SerialGate-1020(w)/ALL	
	SerialGate-1040	0°C ~ 50°C
	SerialGate-1080	
SerialGate-1160		
Humidity	Max 95% R.H	

## SerialGate SPEC SHEET

LED	Power ,Serial ,Ready, Link	
Serial Port Protection	± 15kV ESD Protection	
SD/MMC CARD	SerialGate-1040 SerialGate-1080 SerialGate-1160	SD Support(Max 32GB)

### Software

Protocol	TCP, UDP, Telnet, ICMP, DHCP, TFTP, HTTP, SNMP 1/2/3, SSH, SSL
Management Tool	Portview
Configuration	Telnet, Web

### Ordering Information

SerialGate-1010 (RS232)	1 x Serial Port (RS232 only)
SerialGate-1010 (Combo)	1 x Serial Port (RS422/RS485 selectable)
SerialGate-1010/ALL	1 x Serial Port (RS232/RS422/RS485 selectable)
SerialGate-1010w/ALL	1 x Serial Port (RS232/RS422/RS485 selectable)
SerialGate-1020 (RS232)	2 x Serial Port (RS232 only)
SerialGate-1020 (Combo)	2 x Serial Port (RS422/RS485 selectable)
SerialGate-1020/ALL	2 x Serial Port (RS232/RS422/RS485 selectable)
SerialGate-1020w/ALL	2 x Serial Port (RS232/RS422/RS485 selectable)
SerialGate-1040 (RS232)	4 x Serial Port (RS232 only)
SerialGate-1040 (Combo)	4 x Serial Port (RS422/RS485 selectable)
SerialGate-1080 (RS232)	8 x Serial Port (RS232 only)
SerialGate-1080 (Combo)	8 x Serial Port (RS422/RS485 selectable)
SerialGate-1160 (All)	16 x Serial Port (RS232/RS422/RS485 selectable)