

Golden Tulip-1/USB

English Manual

August 21, 2013

Version 1.0

Revision History

Revision Date	Version	Pages	Description
Aug. 21, 2013	1.0	All	Product released

Copyright 2013 SystemBase Co., Ltd. All rights reserved.

Internet Webpage: <http://www.sysbas.com/>

Tel: +82-2-855-0501 FAX: +82-2-855-0580

16F Daerung Post Tower-1, 212-8, Guro-dong, Guro-gu, Seoul, Republic of Korea

For any inquiries or comments, contact tech@sysbas.com

Contents

Greetings from CEO.....	4
Golden Tulip-1/USB	5
- Product Specifications.....	5
Driver Installation in Windows 98.....	7
Driver Installation in Windows 2000/XP/2003.....	9
Driver Installation in Windows Vista/2008/7/8.....	11
Removing Driver	15

Greetings from CEO

We appreciate all the customers for their deep interest in our products.

SystemBase has been engaged wholly in the field of the serial communications to produce the various products since founded in 1987.

Along with the recent booming market trend by the advanced skill of high speed communication related to Ethernet, the applicable field of the old serial communications could not draw the attention of the public. Consequently the customers of the serial communications have faced the difficulty of very poor technical support from the supplier in spite of their wide use.

But the customers of SystemBase do not need to worry about such inconveniences since the technical support to the customers have been kept effectively so far and will continuously provide in future by the engineers and technicians in our company.

Once again we appreciate all of our customers who have loved our products during the past years.

Golden Tulip-1/USB

USB is a complex word of “Universal”, meaning all peripheral devices use the same connector, and “Serial”, meaning devices are connected as a daisy chain through serial transmission.

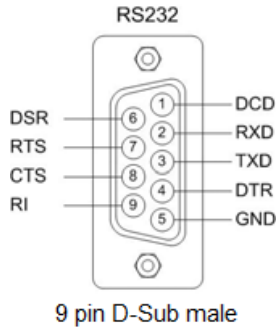
USB is an interface suggesting a solution to inconvenience and inefficiency caused by slow speed and limited device connection of existing external ports (serial or parallel). Compared to external ports that were only used to connect devices such as modems, printers and scanners, USB is powerful in that it connects all types of basic peripheral devices that were each connected via different types. Also, when a new device is plugged, it's automatically detected without rebooting or manually setting up any process, with enabling 127 connections at maximum. Installation is handy since PnP is supported. No extra equipment is needed since most of the main-board chipsets include the USB controller.

USB to Serial Converter (Golden Tulip-1/USB) supports RS-232 port from USB port to DB9/Male connector. USB cable is type A, which can utilize the USB port of the PC or the USB hub. This product gets its power supply from USB port in the PC, and this makes the product powerful since no external power supply is required.

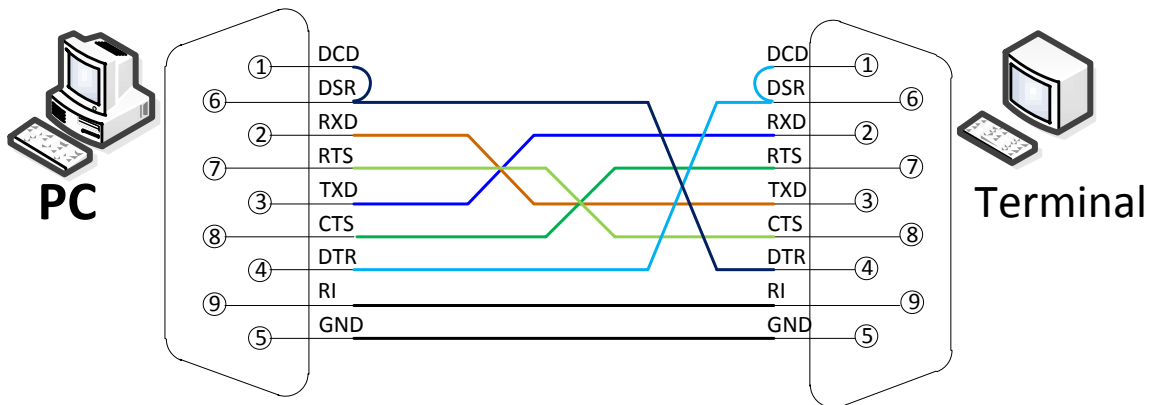
- Product Specifications

Communication Speed	Max. 921.6Kbps
Bus Interface	USB 1.1/2.0 Specification
Circuit Interface	RS232
Number of serial port	1 port
Connector	9 pin D-Sub male
Signal	Full Modem Signal
Circuit Protector	15kV surge protector installed
Supported OS	Windows 2000/XP/2003/Vista/2008/7/8, Linux, Mac

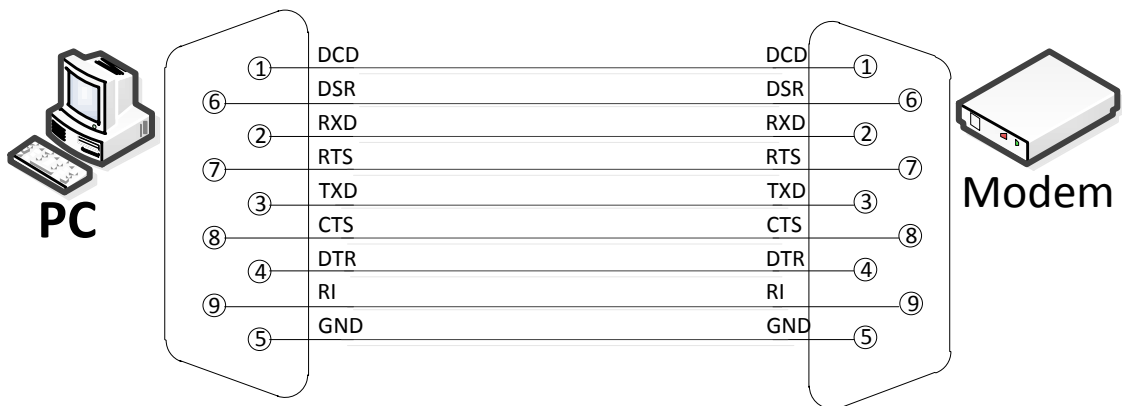
9 Pin Connector (male type)



How to connect to a terminal



How to connect to a modem



Driver Installation in Windows 98

1. Run Windows 98.
2. Connect Golden Tulip-1/USB to the USB connector of the PC.
3. Click “Next”.



4. Select the top option and click “Next”



5. Check “Specify a location:” and specify the location of Windows 98 device driver. If you have the driver CD provided with Golden Tulip-1/USB, put it into the CD-ROM drive and browse and select the location of the driver as “[CD]:\DRIVERS\Win98” then click “Next”.



6. Click “Finish” to complete the installation process.



7. When “Add New Hardware Wizard” appears again, follow the step 3 to 6 once more.

Driver Installation in Windows 2000/XP/2003

- Install procedures for 64bit drivers are identical to 32bit drivers
1. Run Windows 2000/XP/2003.
 2. Connect Golden Tulip-1/USB to your PC's USB port.
 3. Insert "Install CD" included in the product into the CD drive.
 4. Select "Install software automatically (Recommended)", then click "Next".



5. Click "Finish".



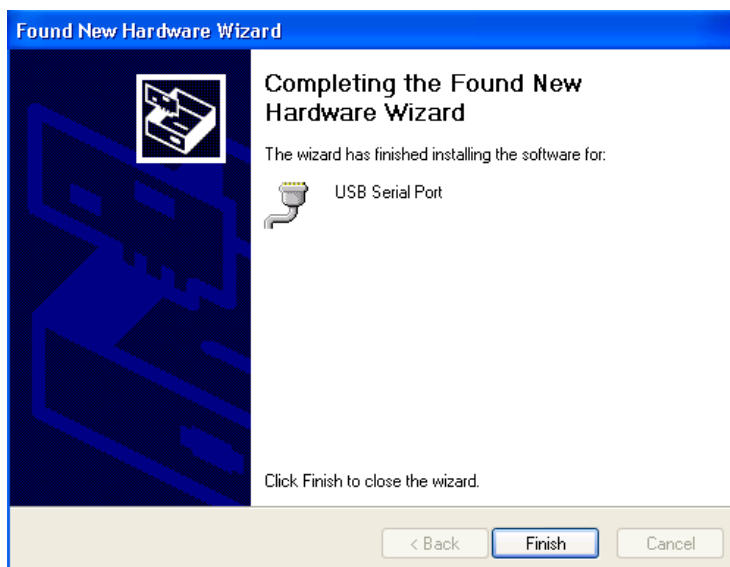
6. Steps 4 through 6 automatically install drivers in the CD. "USB Serial Converter" will all be automatically installed.

Driver Installation – Windows 2000/XP/2003

- Following procedures will guide you through installing “USB Serial Port”. Select “No. Do not connect now”, and then click “Next”



- Click “Finish”



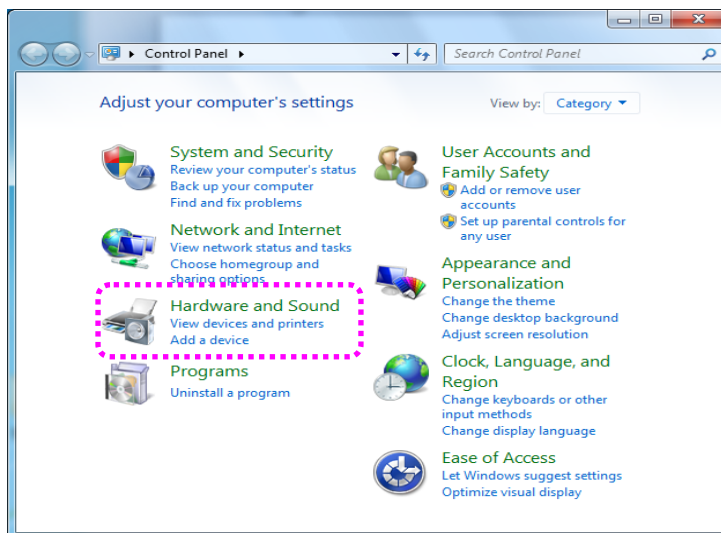
- Steps 7 through 8 automatically install drivers in the CD. “USB Serial Port” will be automatically installed.
- Following picture shows “Device Manager” after carrying out all steps. As can be seen “USB Serial Converters” and “USB Serial Ports” are successfully installed. Golden Tulip-1/USB installation on Windows 2000/XP/2003 is now finished.

Driver Installation in Windows Vista/2008/7/8

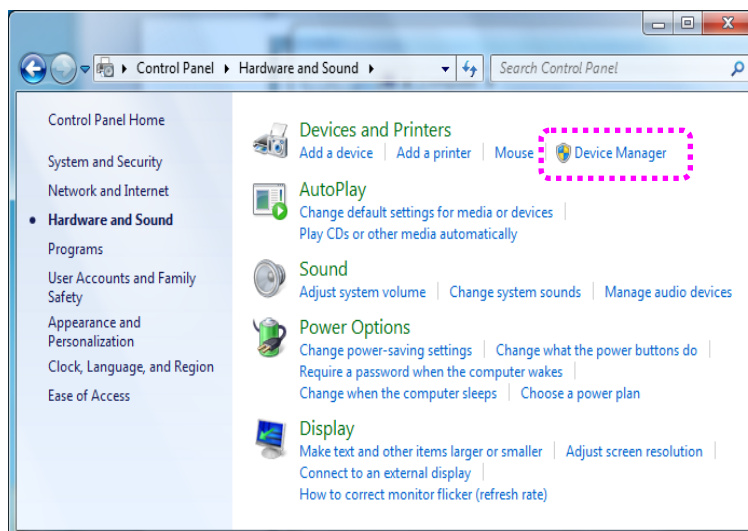
Install procedures for 64bit drivers are identical to 32bit drivers

For Windows Vista or later, when your PC is connected to the Internet, the OS will search for the newest driver for the newly discovered device.

1. Run Windows Vista/2008/7/8
2. Connect Golden Tulip-1/USB to the USB port in your PC.
3. Insert the included CD into the CD drive.
4. Click “Hardware and Sound” in “Control Panel”

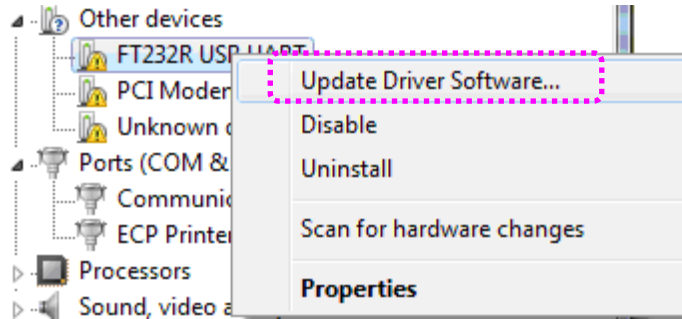


5. Following picture shows “Device Manager” after step 4.
Click “Device Manager”.

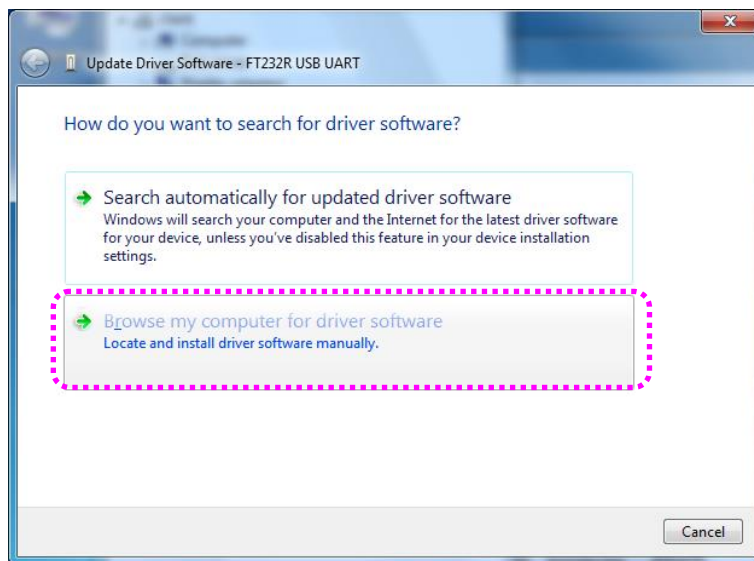


Driver Installation – Windows Vista/2008/7/8

6. Right click “FT232R USB UART” in “Device Manager” then select “Update Driver Software...”



7. Click “Browse my computer for driver software” in order to install the driver manually.

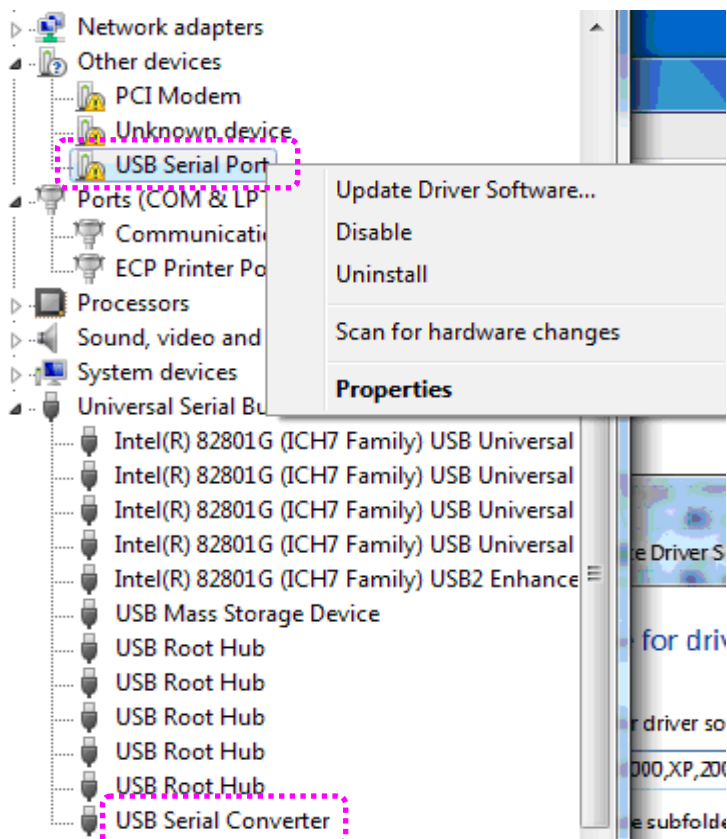


Driver Installation – Windows Vista/2008/7/8

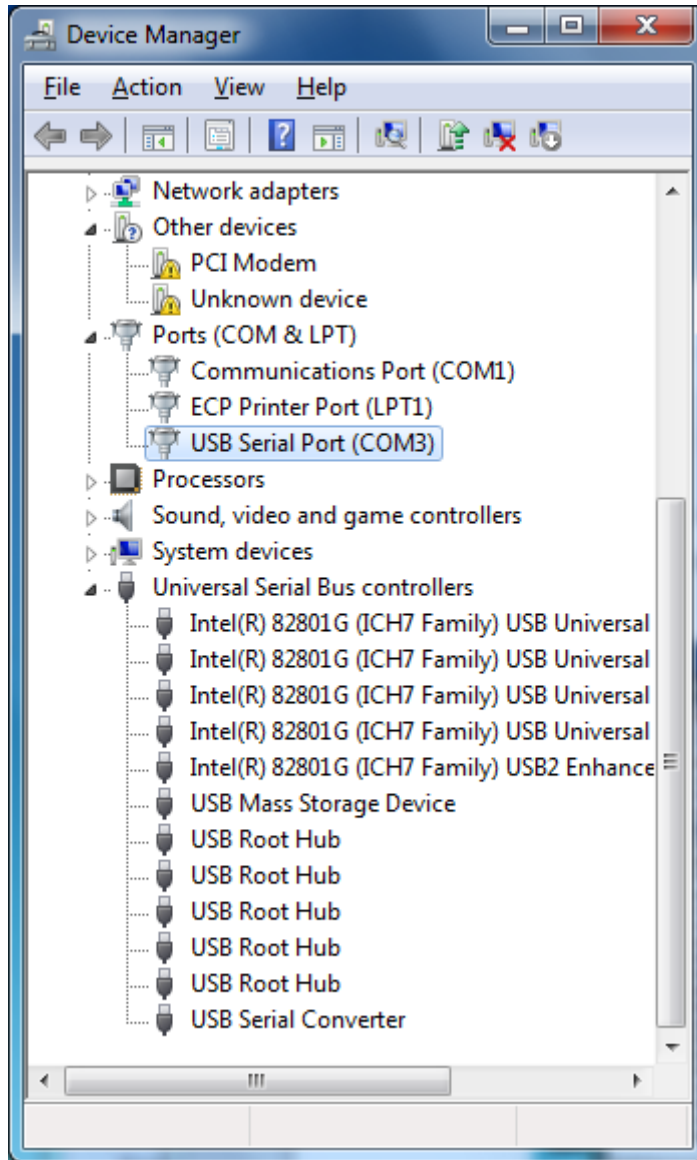
- Click “Browse...” and set the location of the driver as “[letter assigned to the CD driver]:\Win2000,XP,2003,Vista,2008,7,8”



- Confirm that “USB Serial Converter” is installed then, right mouse click "USB Serial Port" and follow the same process from step 6 again.



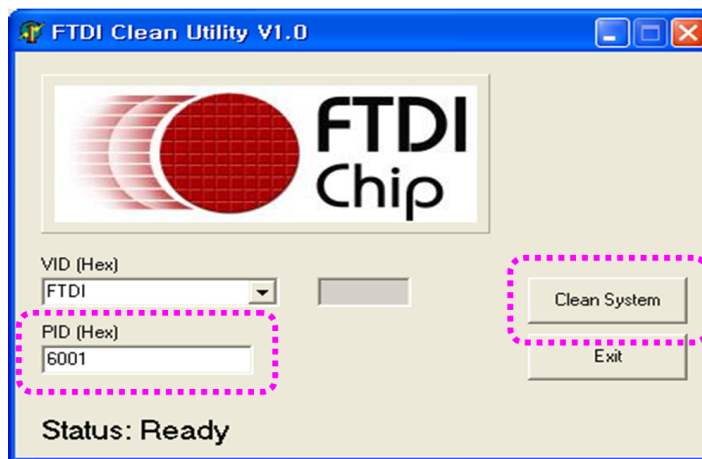
10. Following picture shows “Device Manager” after all the steps are completed. As shown below, “USB Serial Converter” and “USB Serial Port” are successfully installed.



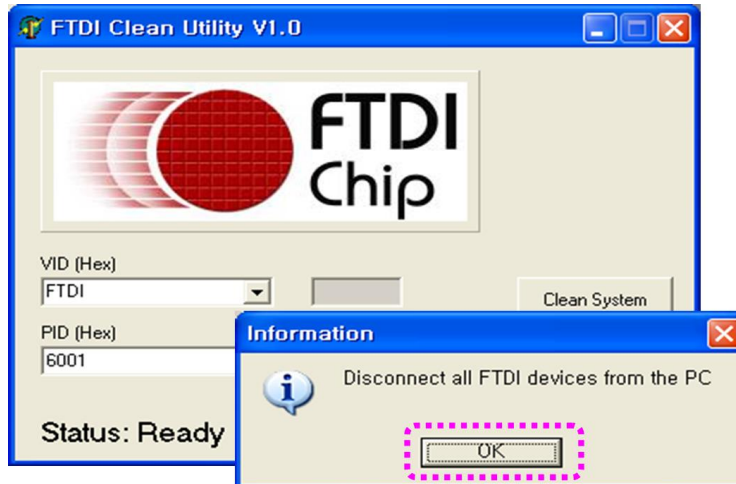
11. Following picture shows “Device Manager” after all the steps are completed. As shown below, “USB Serial Converter” and “USB Serial Port” are successfully installed.

Removing Driver

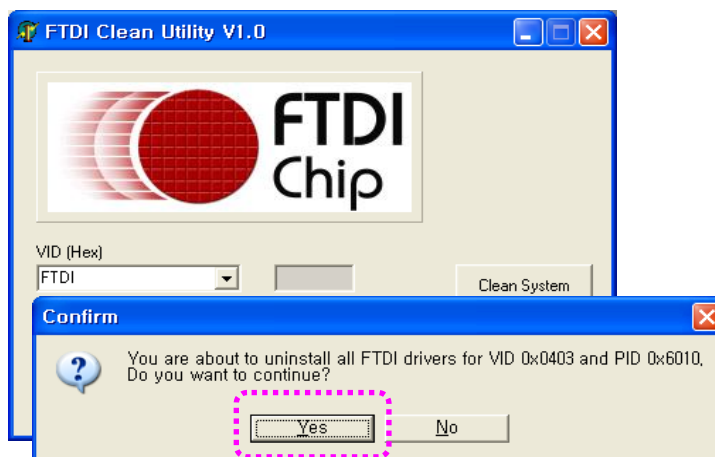
1. To remove the driver, please run FTCClean.exe.
In Windows Vista or later version, the user needs to run it as the administrator. Run the file by right mouse clicking on it and select "Run as administrator". When the user account control message appears, click yes to continue.
2. Insert the included CD in the CD-ROM drive.
Open the folder named "Win2000,XP,2003,Vista,2008,7,8".
3. Run "FTCClean.exe". Type 6001 under "PID (Hex)", then click "Clean System" button.



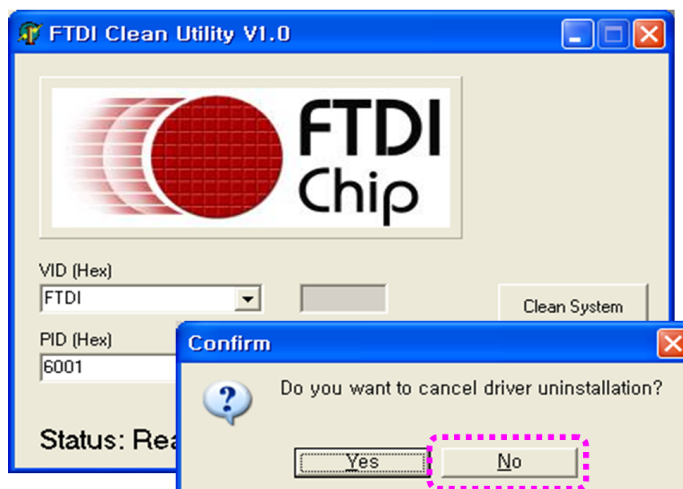
4. Click "OK" when following message appears.



5. Click "Yes" when following message appears.



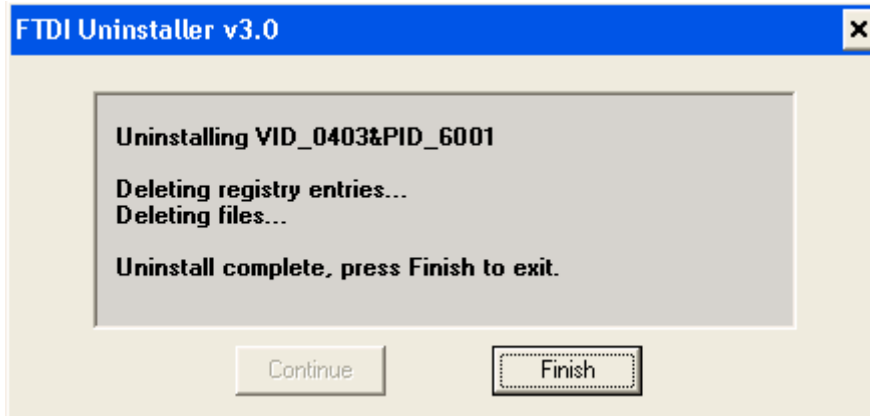
6. Click "No" when following message appears.



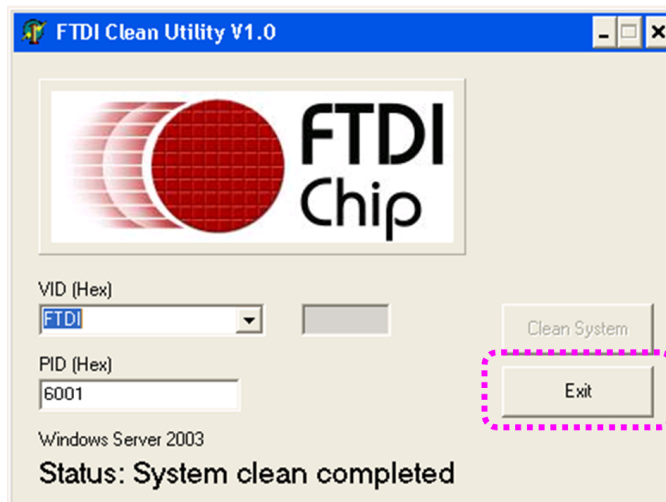
7. "FTDI Uninstaller v3.0" window will appear & disappear several times. This is a normal

Driver Setting

uninstall process so wait until this window does not appear any more.



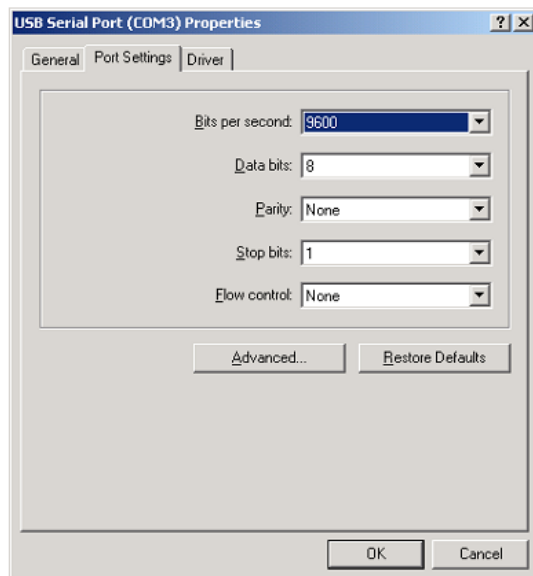
8. Driver removal is completed when the status shows "System clean completed".



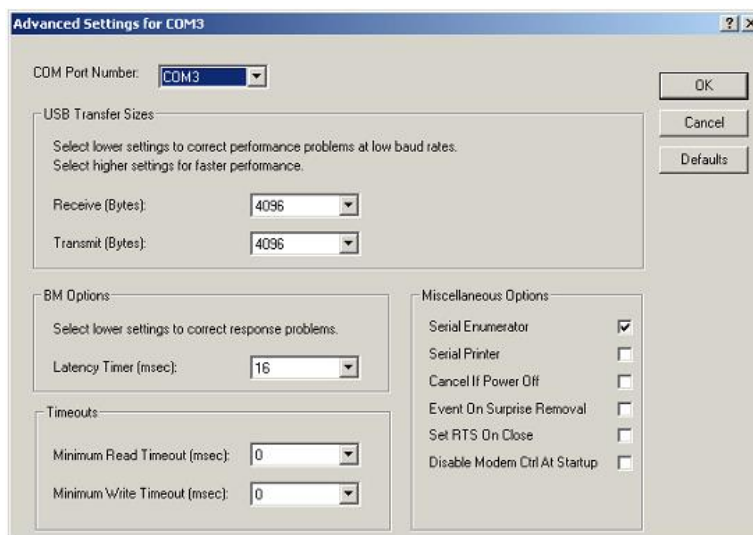
Remove Golden Tulip-1/USB from the USB port in the PC.

Driver Setting

1. An advanced properties page is available for devices using the device. To access the advanced properties page, open "Device Manager" in Control Panel. Find the USB serial port you want to change the properties of it and right mouse click on it. Select "Properties" from the menu then select the "Port Settings" tab to get the window below.



2. This window allows configuration of the basic device parameters (e.g. Baud rate, data bits, parity, stop bits and flow control). To access more advanced settings, click on the "Advanced..." button to display the advanced properties window as shown below.



3. This page will allow the following parameters to be modified:

Driver Setting

- COM port number
- USB buffer sizes
- Latency timer
Alter this to correct compatibility problems for obsolete applications.
- Read and write timeout values
You can modify this for timing of timeout event if there are no more data sent or received.
- Serial Emulator: The function of the serial enumerator is to detect a Plug-and-Play enabled device (such as a serial mouse or serial modem) that is attached to the USB serial port.
- Serial Printer: If enabled, serial printer will disable timeouts to allow for long delays associated with paper loading.
- Cancel If Power Off: The Cancel If Power Off option can be used to assist with problems encountered when going into hibernate or sleep mode. This will cancel any requests received by the driver when going into hibernate or sleep mode.
- Event on Surprise Removal: The Event On Surprise Removal option is generally left unselected. If an application sets SERIAL_EV_EVENT2 (refer Windows DDK) in its event bit mask and this feature is enabled, the device driver will signal this event on surprise removal.
- Set RTS on Close: Selecting the Set RTS On Close option will set the RTS signal on closing the port.
- Disable Modem Control at Startup: This option is used to control the modem control signals DTR and RTS at startup. In normal operation, the modem control signals at startup follow the behavior of the legacy port. However, due to the timing differences between a legacy COM port and a virtual COM port, a "spike" on one of these signals in the legacy port can appear as an assertion of the signal in the virtual COM port.

Do not adjust these parameters if you can use the device without any problem. If necessary, please contact us at tech@sysbas.com first.