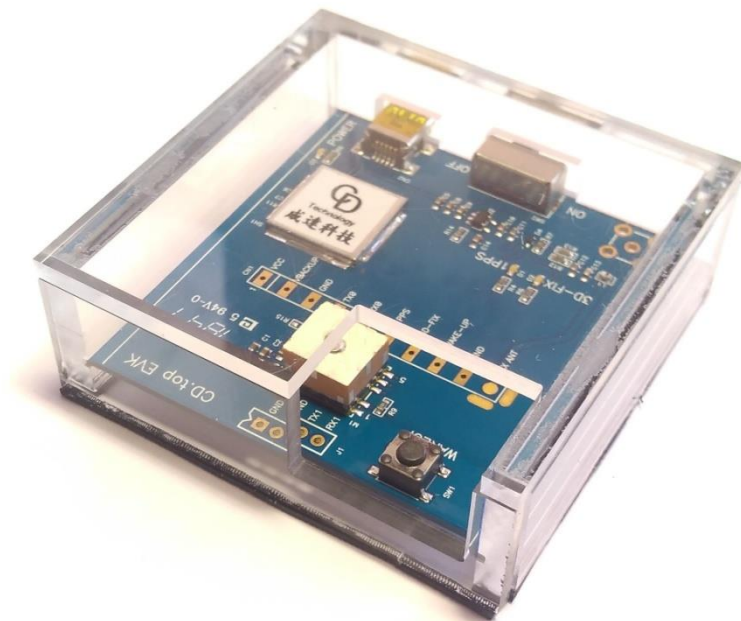


# CDTop Technology

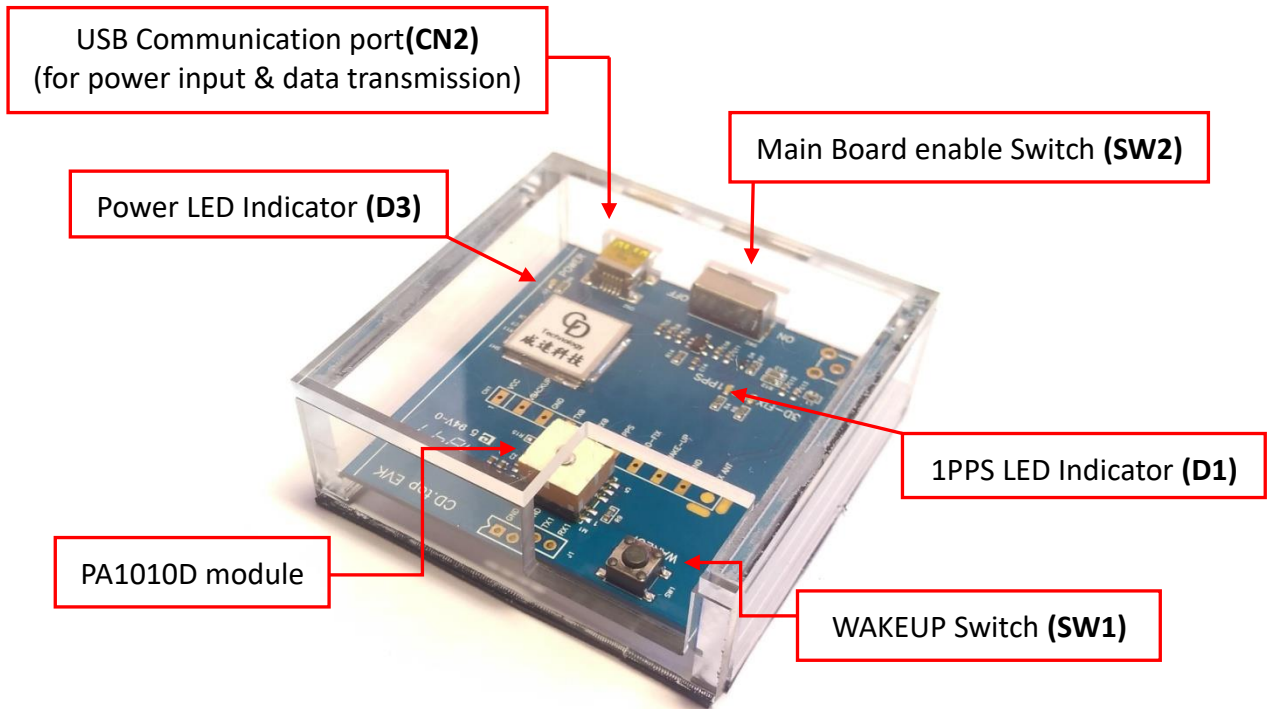


## PA1010D Module EV-Kit User Manual



## 1. Hardware overview :

The EV-Kit's detail device description is shown below on Picture 1.

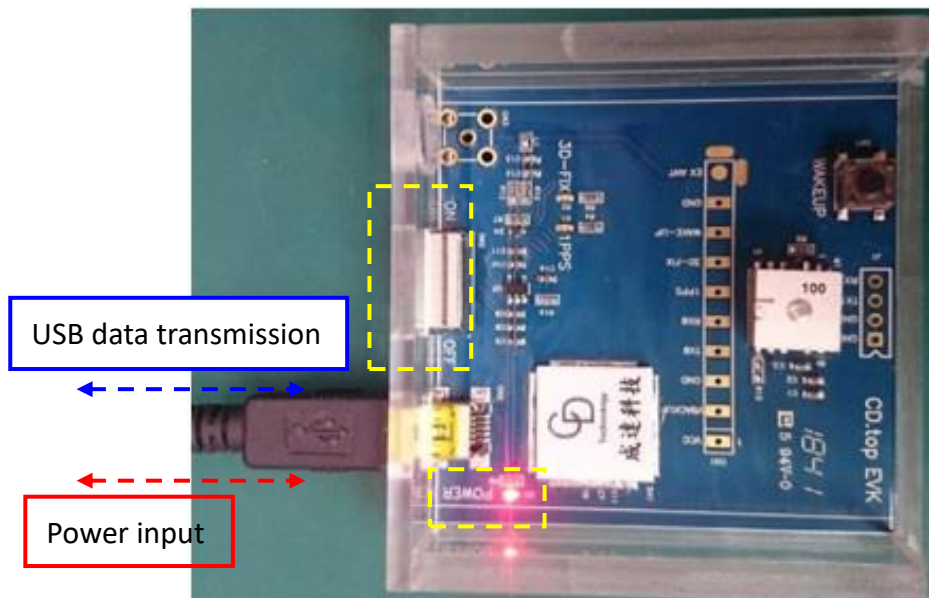


(Picture 1.)

## 2. Operating Instruction

### Step 1:

Connect the USB cable between PC and EV-Kit, the **Power LED Indicator(D3)** light On shown below as Picture 2. The USB cable is used to power the EV-Kit and transfer communication data.



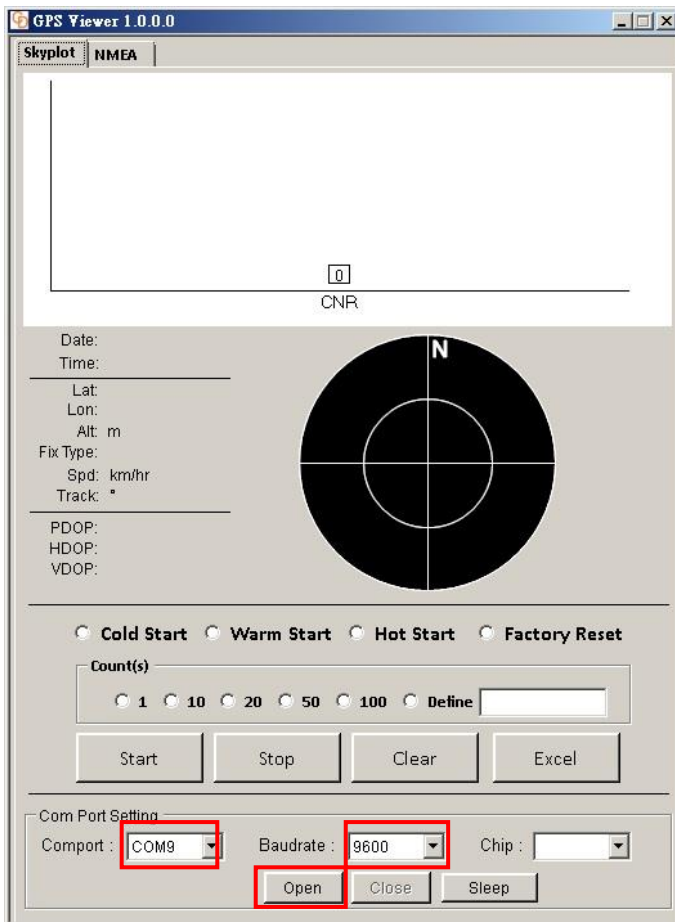
(Picture 2.)

### Step 2:

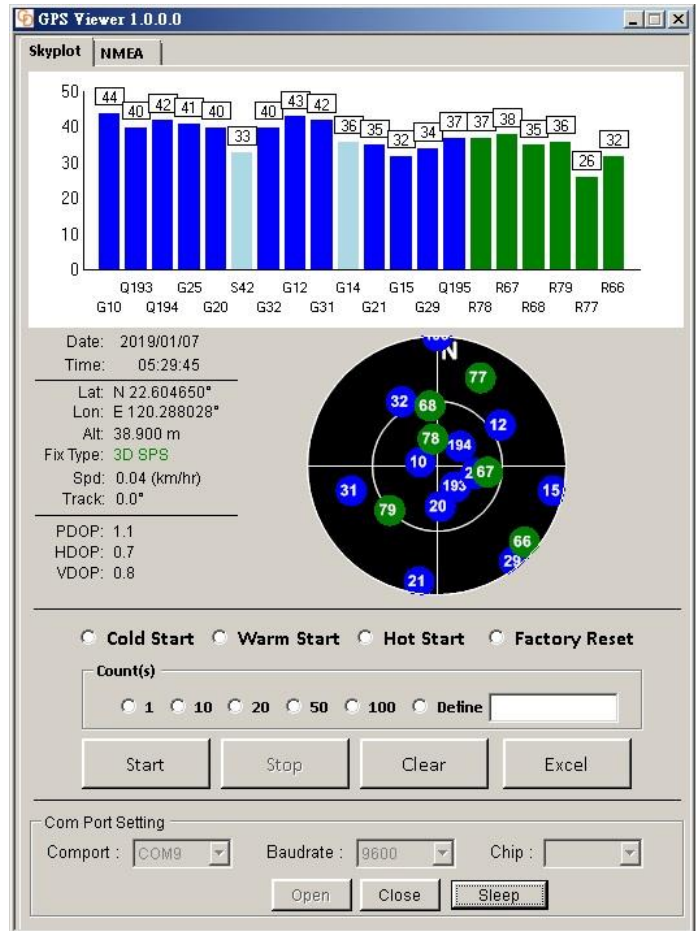
Switch the **Main Board enable Switch(SW2)** from **OFF** to **ON**.

### Step 3:

- Double click < **GPS Viewer.exe**> to start the application, the main screen of the program should appear like Picture 3 shown below.
- Select the appropriate <**COM Port**> and < **Baud Rate** > value, like Picture 3 shown below.
- Finally click <**Open**> like the following Picture 4.



(Picture 3.)



(Picture 4.)

- When PA1010D module finished positioning that **1PPS LED Indicator (D1)** green blinking like the below Picture 5.

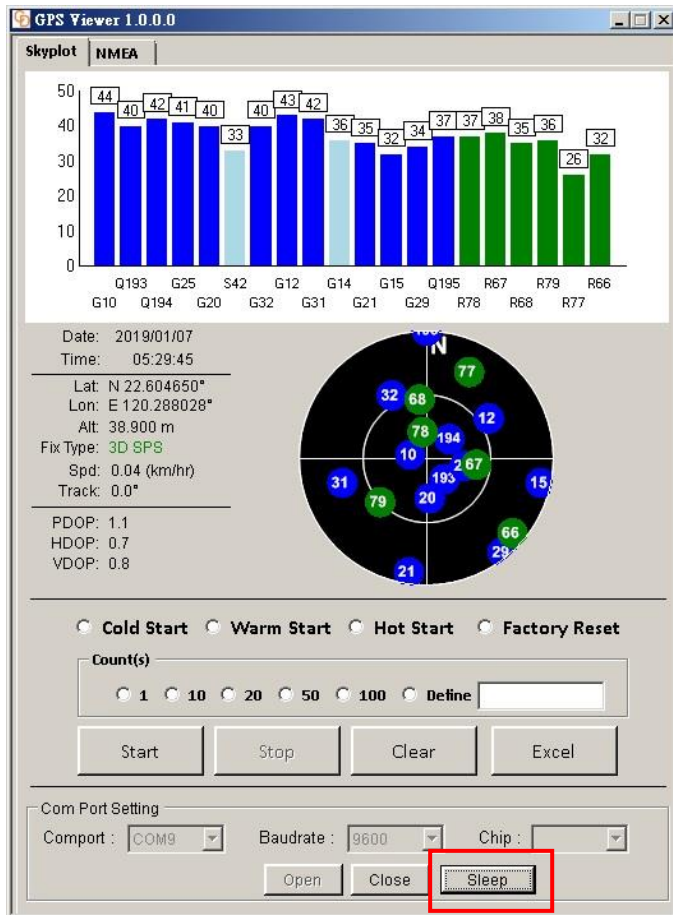


(Picture 5.)

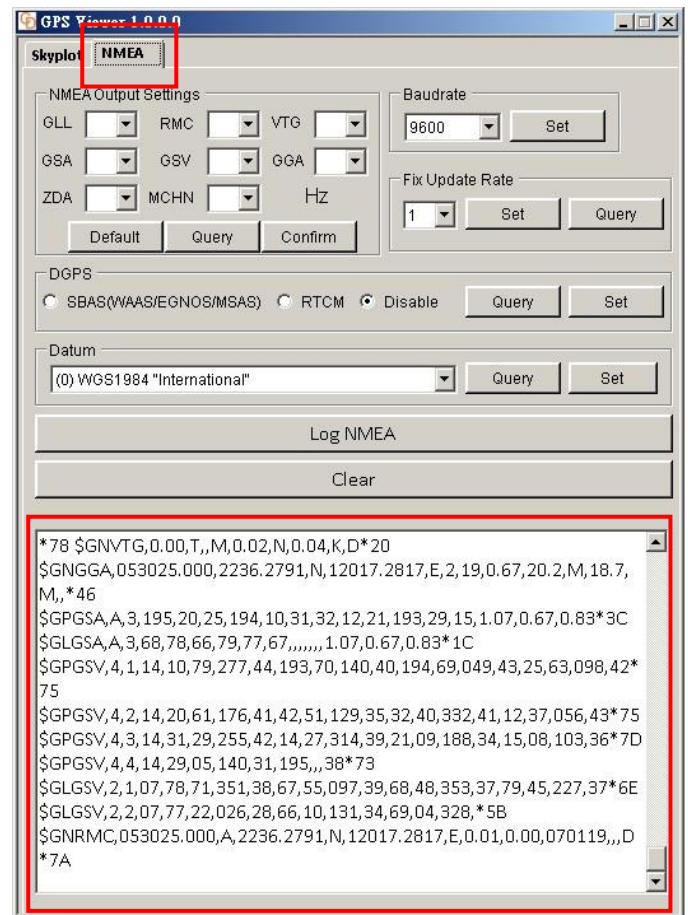
#### Step 4:

The PA1010D module entry **Backup mode**:

- Click **<Sleep>** , this action like send a NMEA command → **\$PMTK225,4\*2F** to module entering to backup mode, refer to Picture 6 shown below.
- Check the **NMEA** page find the NMEA code stopping output, like Picture 7 shown below.



(Picture 6.)



(Picture 7.)

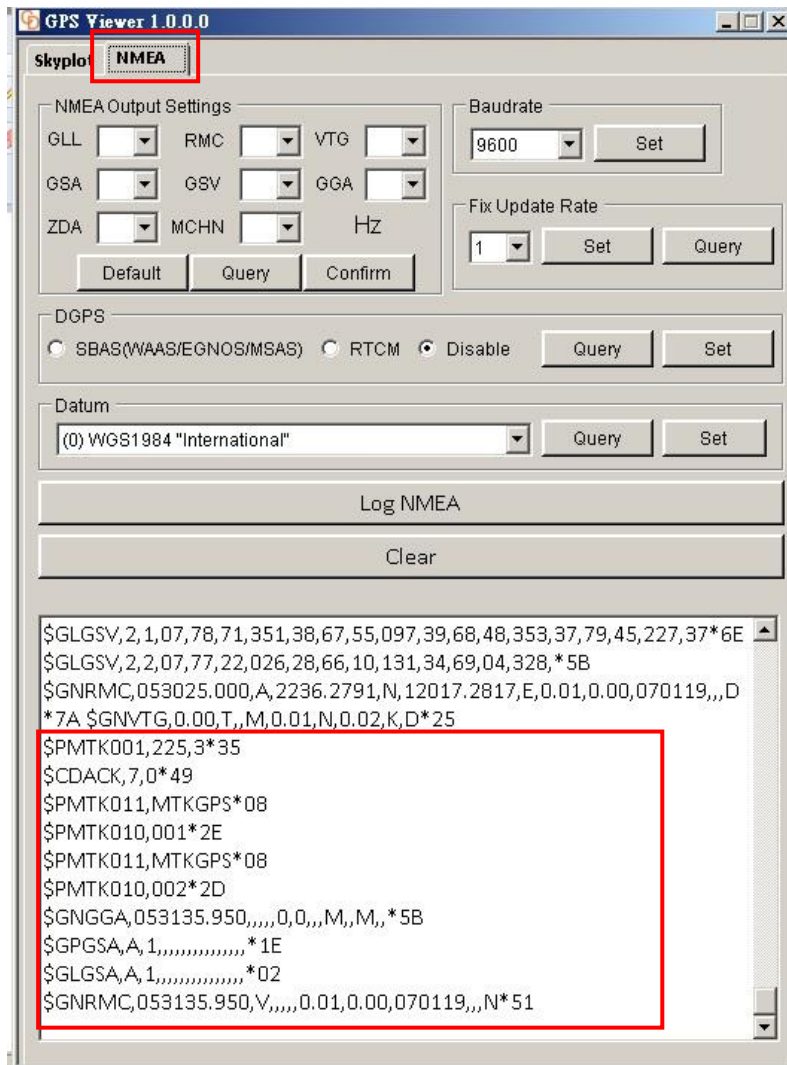
#### Step 5:

The PA1010D module returned to full power continuous mode:

- Push the **WAKEUP Switch(SW1)** more than 1 second, refer to Picture 8 shown below.
- The PA1010D module returned to full power continuous mode, find the acknowledgment response and the NMEA code continuous output, refer to Picture 9 shown below.



(Picture 8.)



(Picture 9.)